

Alternative 1

Draft Conceptual
Not to Scale

Key

Phase 1

- Crossover Road Removed
- Reconfigure Intersection

Phase 2

- Reactivate LGC Alluvial Fan
- Install Vegetated Berm (LGC)
- Remove Culvert
- Add Bridge/Causeway
- Raise Roadway
- Decommission Rd
- New Driveway (A or B)
- LGC Floodplain Grading
- Subsurface Water Flow
- Primary Stream Channel
- Vegetated Shoreline/
Soft Erosion Protection
- Upgrade/Add F-B Culvert

Phase 3

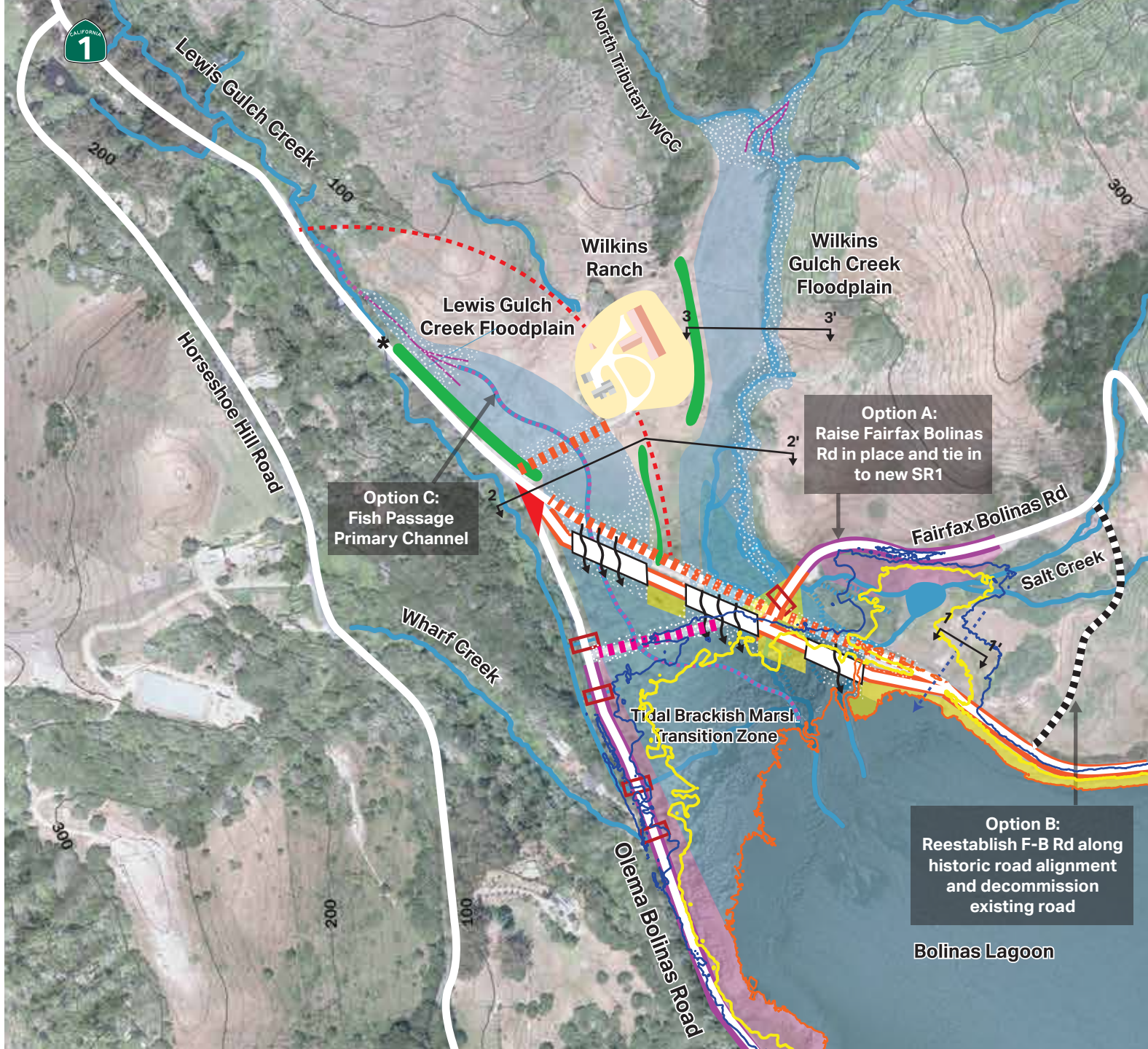
- Upgrade/Add O-B Culverts
- Vegetated Shoreline/
Soft Erosion Protection
- WGC Floodplain Grading
- Reactivate WGC Alluvial Fan
- Connector Roadway

Phase 4

- Raise Roadway

Project Features

- MHHW (5.6')
- Late Century SLR (11.1')
- Mid Century SLR (8.6')
- Surface Water Flow
- Road
- Existing Stream
- Cross Section



Option C:
Fish Passage
Primary Channel

Option A:
Raise Fairfax Bolinas
Rd in place and tie in
to new SR1

Option B:
Reestablish F-B Rd along
historic road alignment
and decommission
existing road

Bolinas Lagoon